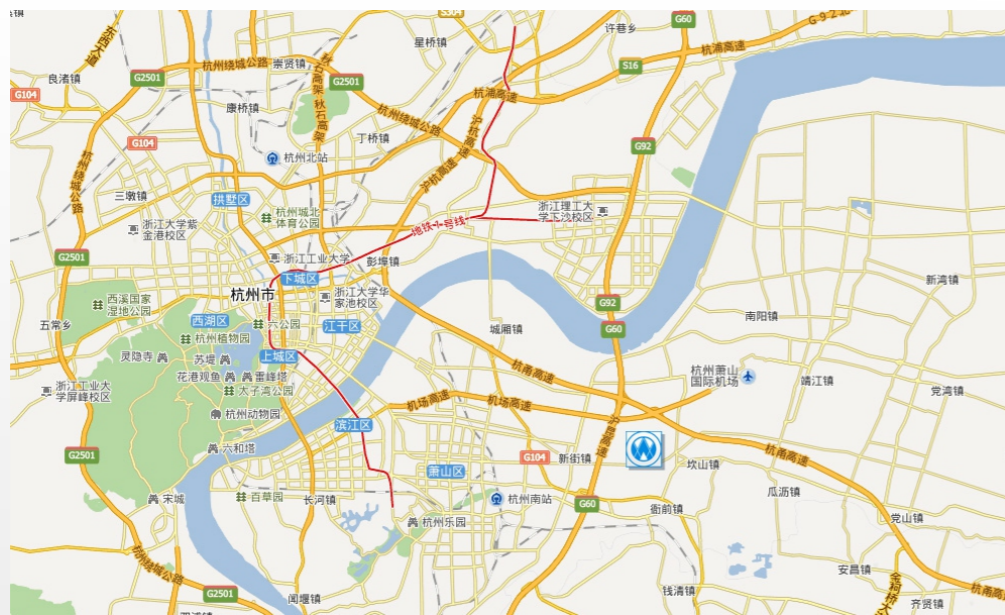




杭州恒益筛网有限公司
HANGZHOU HENGYI FILTER CO.,LTD



地址: 浙江省杭州市萧山区新街镇陈家园
电话: 0571-82851288 / 82614113
传真: 0571-82618885
E-mail: web@zjhzy.cn
<http://www.zjhzy.cn>
<http://hzhengyi.cn.alibaba.com>

Add: Xinjie Town, Xiaoshan District,
Hangzhou, Zhejiang, China.
Tel: 86-571-82851288 / 82614113
Fax: 86-571-82618885
Email: web@zjhzy.cn
<http://www.zjhzy.cn>

创新 务实 求精 进取
Innovation Pragmatic Refinement Aggressive

公司简介 Company Introduction

杭州恒益筛网有限公司成立于1995年，位于杭州市萧山区，是专业生产金属丝网、过滤网、烧结网和过滤器的公司。公司产品广泛应用于石油化工、化纤、制药、水处理、机械、电子、印刷、磨料、军工等行业。凭借先进的生产技术和检测设备，完善的质量保证体系，经过近二十年的生产经营，恒益已发展为集拉丝、编织、烧结、成套设计和产品加工为一体的科技型企业，产品受到国内外客户的认可和应用。

Hangzhou Hengyi Filter Co., Ltd founded in 1995, is located in Xiaoshan District, Hangzhou City--10minuts by car from Hangzhou airport.It is specializing in producing wire mesh, filter mesh,sintered mesh and filters.The products are widely used in almost all areas of industry, including chemicals, pharmaceuticals, water treatment, mechanical engineering, printing and military industries. With advanced production technology and testing equipment, perfect quality assurance system, after nearly 20 years of production and operation, Hengyi Filter has developed into a technical company capable of drawing wire , weaving mesh, sintering wire mesh, designing filters and doing OEM. Products are recognized and used by users at home and abroad.

荣誉/优势 Honor / advantage

► 我们的优势 Advantage

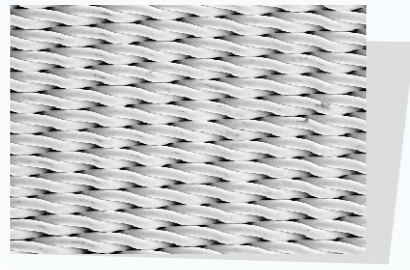
编织，真空烧结，图纸设计，轧制，成型，焊接，清洗等齐全的工艺，满足客户定制需求。
Wire Weave, AutoCad Design, Wire drawing, Vacuum Sintering, Welding, Shaped, Cleaning etc.

► 相关证书 Credentials



金属编织网 Single layer meshes

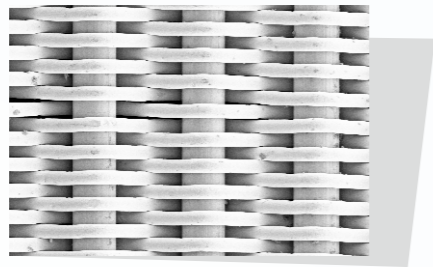
▶ 斜纹编织密纹网 Twilled weave



斜纹编织密纹网的特点是用数量少而粗的经线，用数量多而细的纬线，采用斜纹方法编织而成。这种密集的织法使斜纹编织密纹网十分坚固，且过滤精度非常高。这就是斜纹编织密纹网成为很多过滤设备理想选择的原因。标准材料是SUS304/316L。

For monofilaments, a twilled mesh weave produces the smallest pores and a smooth mesh surface, whilst the larger material cross section gives higher levels of mesh stability. When passing through twilled mesh, the Particles must negotiate five offset pore levels. This means that oblong, thin, rod-shaped and fibrous particles are securely retained. Fine specification twilled meshes are used for fine filtration such as pressure filtration in hydraulic steering equipment and fuel filters for critical applications. Coarser specification twilled meshes are used for pressure and vacuum filtration (disc, cell and drum filters) and as a porous medium for fluidised bed applications. These meshes are usually manufactured from stainless steel.

▶ 平纹编织密纹网 Plain weave

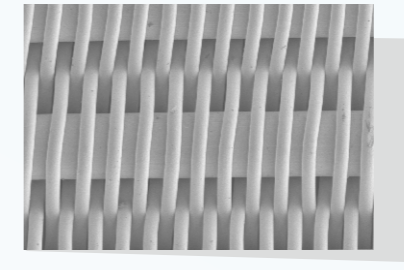


平纹编织密纹网是滤网的重要网型，经线间隔大于纬线间隔。平纹编织密纹网的表面很紧凑，过滤是发生在经纬线交叉孔。它的机械稳定性远高于普通的方孔网。所用标准材料是不锈钢SUS304/316L。

These meshes have a slightly textured surface and are particularly useful for high flow rates and low pressure loss. They are used where mechanical loading is increased, such as for settling filters and filter candles.

金属编织网 Single layer meshes

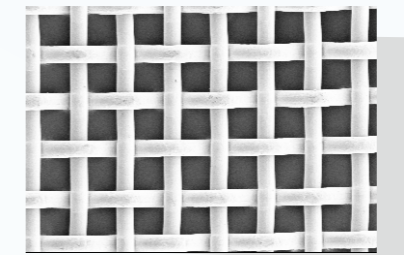
▶ 反向平纹编织密纹网 Reverse Plain Dutch Weave



反向平纹编织密纹网的开发是为了在固液分离过程中提高精滤网的机械稳定性。它的织法为平织，但经线多而细，纬线则相对少而粗，此网通常被称为反向平纹编织密纹网。反向平纹编织密纹网可以进行反冲洗，在清洗或清除滤饼中，机械稳定性表现出色。

Reverse Plain Dutch Weave is a further development from plain weave mesh. In comparison to the standard plain weave, it has a greater pore count, and the pores on the surface are smaller than the inner pores. The mesh therefore achieves higher flow rates and greater dirt removal capabilities, and also features exceptional backwashing performance. These meshes are generally used for oil and fuel systems, subject to higher levels of contamination, and also to protect steering and fuel injection jets as well as friction bearings.

▶ 方孔网 Square weave mesh



方孔网与斜纹网相比，方孔网在编织的网格之间存在一个空隙，这个网孔可以使液体顺畅地通过。网可低阻力和高反冲效率是方孔网的两个特性。方孔网在压差很小的污垢环境中使用，与支撑网配合使用，达到反冲洗的应用效果。

In contrast to the twilled meshes, the wires in this design of mesh are woven with a gap. This results in open apertures, which liquids can stream through. Exceptionally low resistance and particularly effective backwashing are two particular characteristics of this mesh. Square weave meshes are used for dirt filters with low pressure differentials, for applications such as backwashing in conjunction with support meshes.

金属编织网技术参数 (部分规格) Technical data filter mesh

类型 Mesh Type	型号 Model	名义孔径 Nominal pore size µm	目数/英寸 Mesh/inch	孔隙度 Porosity %	有效截面率 A orei %
斜纹编织 Twilled Weave	MXW1970	3	500x3500	35	5
	MXW1570	4	400x2700	33	5
	MXW1280	4	325x2300	34	5
	MXW795	10	200x1800	40	10
	MXW650	12	165x1400	37	9
	MXW500	17	130x1200	35	10
	MXW400	22	100x900	40	10
	MXW360	25	90x800	38	10
	MXW320	30	80x700	38	13
平纹编织 Plain weave	MPW280	36	70x350	60	13
	MPW240	45	60x280	65	13
	MPW140	71	35x175	65	13
	MPW76	140	20x140	68	17
	MPW48	212	12x70	65	21
反向平纹编织 Reverse Plain weave	FPW15	15	FPW15	65	22
	FPW25	25	FPW25	64	31
	FPW30	30	FPW30	64	33
	FPW40	40	FPW40	65	34
方孔网 Square weave	500Mesh	26	500x500	63	25
	400Mesh	36	400x400	68	25
	325Mesh	45	325x325	66	32
	200Mesh	71	200x200	70	37
	100Mesh	150	100x100	72	35
	60Mesh	280	60x60	70	37
	40Mesh	450	40x40	70	38
	20Mesh	850	20x20	70	38

- ▶ 以上为部分产品规格，标准材质为304,316L.其它材料（铜，铜镍合金，镍，钛等），规格按客户要求。
This is part of the product specifications, Standard material is Stainless Steel 304,316L.
Other materials(Copper,Monel,Nickel, Titanium etc)& specifications can be according to customers' requirements.

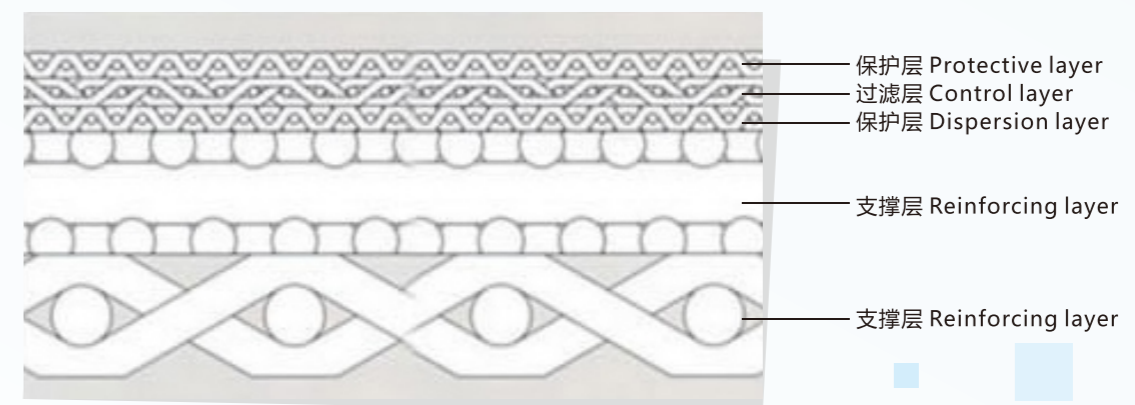
▶ www.zjhzy.cn

烧结金属丝网 Sintered meshes(laminates)

- ▶ 烧结金属丝网材料采用多层金属编织丝网，通过特殊的叠层复合设计，在保护性气氛或者真空条件下加压烧结而成，它既保持了单层金属编织丝网孔隙结构简单，网孔尺寸均匀的特性，又避免了其强度低，刚性差，网孔结构不稳定等不足，并且可以灵活地进行孔径大小、渗透性能和力学性能的匹配设计，综合性能优异。广泛应用于石化、医药、环保、航空等领域。

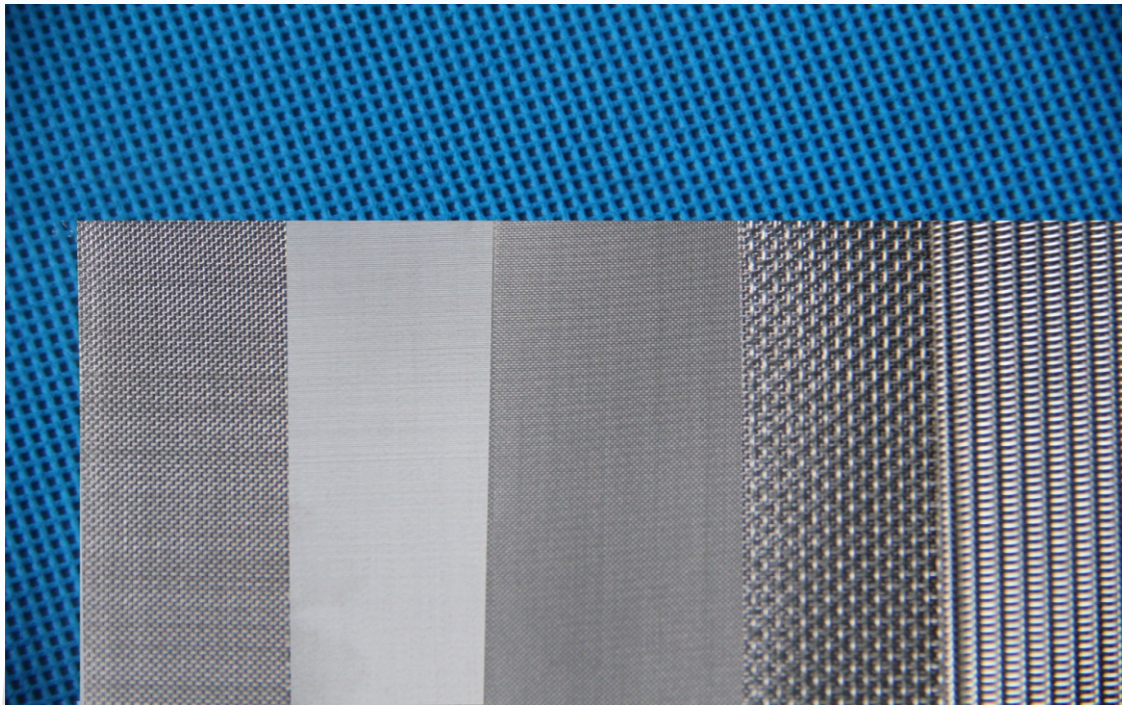
Sintered mesh is a rigid structured composite consisting of multi-layers of metal woven mesh, manufactured from a special lamination design and undergoing a combination of processes such as rolling and vacuum sintering. 5-Layers sintered stainless steel mesh is our standard sintered mesh structure. A single layer of fine woven wire mesh is placed between two layers of coarser square woven meshes, which is then added to two layers of a strong Dutch woven wire mesh and sintered together to form a strong plate. The single layer of fine woven wire mesh acts as the filtration layer, and can be customized to meet a particular filtration rating, ranging from 5 micron to 200 microns. It can then be cut and fabricated into various discs, tubes, filter cartridges, and flat panels.

- ▶ 标准五层烧结网 5-Layers sintered stainless steel mesh



烧结金属丝网 Sintered meshes(laminates)

烧结金属丝网多孔材料的性能 Technical data Sintered mesh laminates



型号 Model	平均孔径 Average pore size μm	初始冒泡压力 不小于 (Bubble-Point Pressure)≥ Pa	渗透性不小于(Permeability)≥		拉伸强度 不小于 (Tensile Strength)≥ Mpa
			相对渗透系数 L/min.cm ² .Pa	渗透系数 m ²	
SSW005	4~6	5450	1.1×10 ⁻⁴	8.0×10 ⁻¹³	100
SSW010	9~12	2700	5.2×10 ⁻⁴	4.8×10 ⁻¹²	100
SSW020	18~23	1360	1.5×10 ⁻³	1.5×10 ⁻¹¹	100
SSW030	28~35	910	2.6×10 ⁻³	2.0×10 ⁻¹¹	100
SSW050	48~55	540	5.6×10 ⁻³	5.2×10 ⁻¹¹	110
SSW080	75~85	340	7.9×10 ⁻³	9.1×10 ⁻¹¹	110
SSW100	93~108	270	9.2×10 ⁻³	1.1×10 ⁻¹⁰	110
SSW150	140~160	180	2.9×10 ⁻²	3.6×10 ⁻¹⁰	110
SSW200	187~213	140	5.0×10 ⁻²	5.8×10 ⁻¹⁰	110

主要特性

孔道光滑，孔结构固定，孔径均匀。
容易反洗再生，使用寿命长
选材范围宽，耐高温，抗腐蚀，抗热震
渗透性好，压力损失低
强度高，可在较高压差下稳定工作
成型加工简单，焊接性能好
性能可靠，易实现连续化生产与自动控制

Main Characteristics

Rigid, Stable and have even pore distribution
Good permeability and low resistance loss
Good regeneration ability with simple and smooth opening
High strength and good integrity
Good thermal and corrosion resistance and good thermal shock resistance
Easily processed, superior welding performance
Stable and high performance to continuous and automatic process

注：本表数据针对典型五层网结构的烧结金属丝网多孔材料；

本表中的相对渗透系数在ΔP=1000Pa下测定，如遇特殊样品时应标明其测量时的压差。

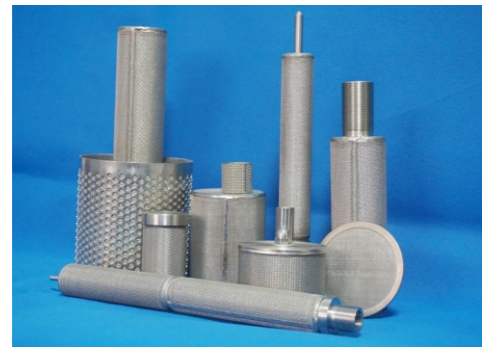
无拼接板材最大尺寸：1200x1200MM

材质：不锈钢304, 316L, 钛, 蒙乃尔等

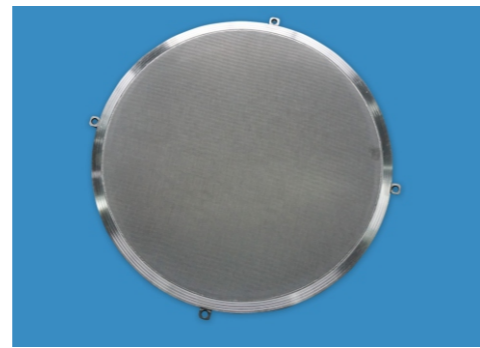
Just for standard 5-layers Sintered mesh.

Maximum dimension of plate (without joining) : 1200x1200MM

Materials : Stainless Steel 304, 316L, Ti, Monel



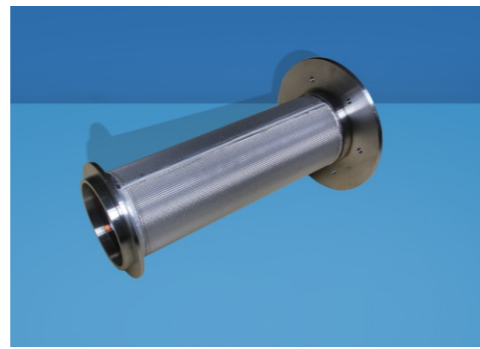
过滤元件 Filter Elements



滤盘 Filter Plate



滤篮 Basket Filter



滤芯 Filter Cartridge

▶ 主要应用

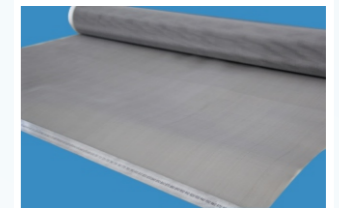
- 气体和液体净化过滤
- 固体颗粒的分离回收
- 极端高温环境下的发散冷却
- 流体的分布与控制
- 气浮传输
- 强化传质传热
- 消音降噪、阻燃防爆

▶ Applications

- Solid particulate separation & recovery
- Transpiration cooling at extremely high temperatures
- Aas flow distribution control
- Flotation & powder conveying
- Gas sampling
- Mass & heat transfer
- Flame arresting & explosion protection
- Noise attenuation
- Flow restriction
- Other applications in industrial fields such as, Petrochemical, Medical/Pharmaceutical and Environmental

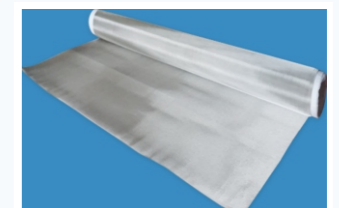
▶ 钛网 Pure Titanium Mesh Series

类型 Mesh Type	规格 Description	优势 advantage
方孔网 Square weave	16Meshx16Mesh/inch	耐腐蚀 corrosion resistance
	80Meshx80Mesh/inch	耐腐蚀 corrosion resistance
烧结钛网 Sintered Ti Mesh	4Layers	比表面积大 Large specific surface area



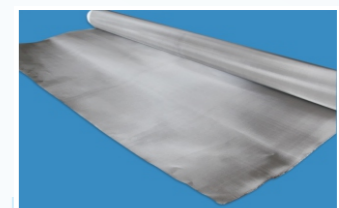
▶ 镍网 Nickel Mesh Series

类型 Mesh Type	规格 Description	优势 advantage
斜纹编织 Twilled Weave	200Meshx1800Mesh/inch	耐腐蚀等 corrosion resistance



▶ 蒙乃尔网 Monel 400 Mesh Series

类型 Mesh Type	规格 Description	优势 advantage
斜纹编织 Twilled Weave	70Meshx800Mesh/inch	耐腐蚀, 耐海水等 Highly resistant to sea water
方孔网 Square weave	100Meshx100Mesh/inch	耐腐蚀, 耐海水等 Highly resistant to sea water
烧结蒙乃尔 Sintered Monel 400 Mesh	3Layers	耐腐蚀, 耐海水等 Highly resistant to sea water



▶ 无氧铜网 Oxygen free copper Mesh Series

类型 Mesh Type	规格 Description	优势 advantage
方孔网 Square weave	325Meshx325Mesh/inch	导热性等 Good heat conduction

